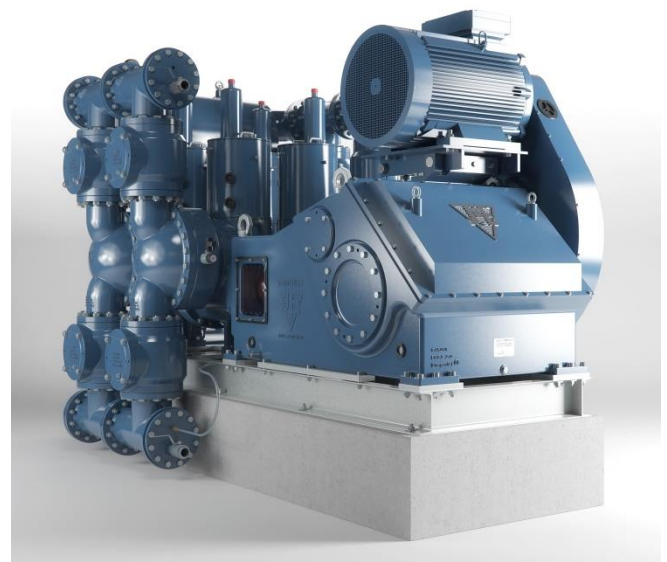
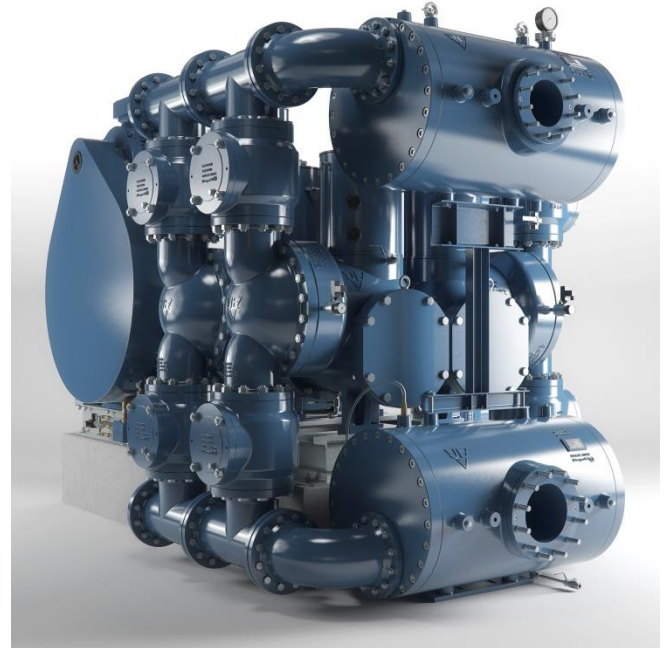


PISTON DIAPHRAGM PUMPS

model "ZDKM"

- Materials:**
Cast-iron, Cast-iron rubber-lined
Various stainless steel
- Capacities:**
0,5 ... 250 m³/h
- Pressure:**
1,6 MPa (16 bar) as standard design,
higher pressures acc. project requirements
- Temperature of pumped material:**
Up to 100°C as standard design,
higher temperatures on demand
- Field of application:**
Pumping of abrasive and aggressive
materials. Very gentle pumping of materials
sensitive to shear
- Remark:**
The well-tried „ZDKM“-model
2-Zylinder-Doppeltwirkend-Kolben-
Membranpumpe) An especially compact
constructed pump. Characterized by high
capacities and quiet operation of the pump.
- Constructional features:**

 - Electrically driven
modular Piston Diaphragm Pump
 - Pump head made of various metal materials
 - Double diaphragm
 - Internal adjustment of pressure and quantity
in dependence to the discharge pressure
 - Inspection opening for valves



[m ³ /h]	5	10	15	25	35	45	55	65	95	125	250
	double acting ZDKM900R										
	double acting ZDKM700R										
	double acting ZDKM500R										